



**Dreamweaver Wood** is a peaceful, secluded woodland nestled within the [High Weald National Landscape](#), just a short drive from the coast.

This charming woodland offers an ideal opportunity for those looking to take their first steps into woodland ownership and management. While spruce is the predominant species, you'll also find mature oak and sweet chestnut scattered throughout, along with birch and hornbeam adding to the diversity.

Winding paths lead from the main parking area into the heart of the wood, where you'll find a storage area and a composting loo. The high tree canopy allows sunlight to filter through, creating bright, open spaces—perfect for setting up a peaceful camp.

A seasonal stream marks the western boundary, attracting wildlife and contributing to the site's rich biodiversity.

Nearby, the picturesque village of Robertsbridge offers local shops, pubs, restaurants, and a train station with direct services to London and Hastings. The historic town of Battle and the coast are also within easy reach.

The ward is Northern Rother, and the County Council is East Sussex.

**Boundaries:** The boundary is open E, W and S and marked with orange paint on trees and posts. N is fenced. N and E border neighbouring woodland, S follows the access track and W borders a seasonal stream.

**Access:** Vehicle access is possible all year round via a hard track and a shared locked gate. Parking is possible within the woodland.

**Covenant:** There is a covenant on the wood designed to ensure the quiet and peaceful enjoyment of this and adjoining woodlands, click [HERE](#) to read and download.

[Click HERE](#) to see free OS maps.

### Details for this wood

**Guide price:** £55,000 - Freehold

**Size:** About 2½ acres

**Location:** Staplecross, Robertsbridge

**OS Landranger:** No.199

**Grid ref:** TQ 76788 22009

**Nearest post code:** TN32 5SH

**Contact:** Ben Williamson

**Phone:** 07958 213 914

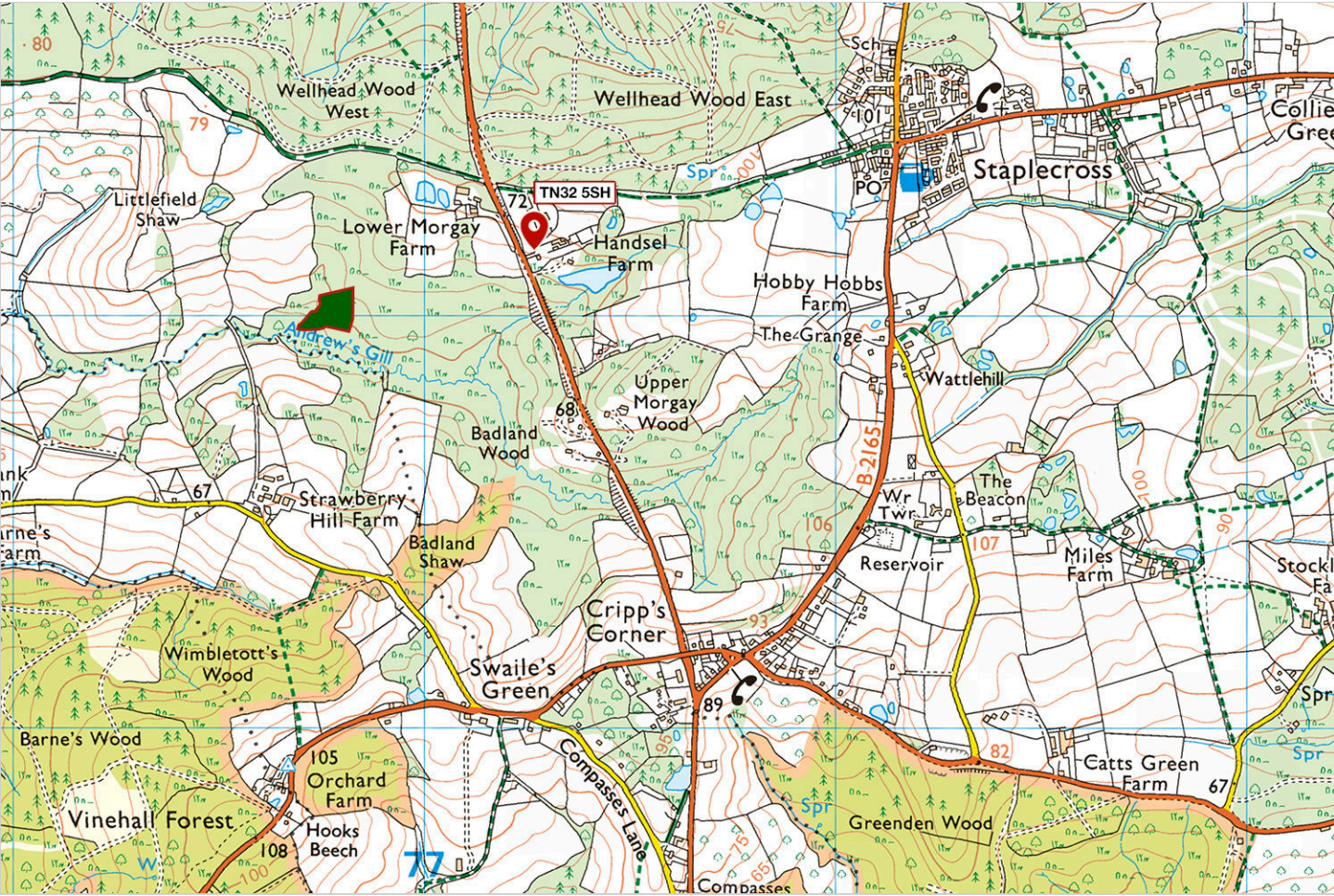
**Email:** [ben@forests.co.uk](mailto:ben@forests.co.uk)

**Viewing:** You are welcome to visit this wood by yourself, but please [Click here](#) to download and print a map showing the location of the woodland and ensure that you have a copy of these sales details with you. Many of our woodlands do not have mobile phone reception or internet access so we recommend either printing the details or downloading them to your phone or tablet. Please take care when viewing as the great outdoors can contain unexpected hazards and woodlands are no exception.

Maps: OS OpenData © Crown copyright and database rights 2025 & [OpenStreetMap](#)



Our Maps







## Directions

### **Dreamweaver Wood, Junction Road, Staplecross, Robertsbridge**

1. [Click here for Bing Maps Directions](#) enter your own postcode, and click on the "Directions" box.

- For viewing purposes, carefully park near the main entrance as marked on the map, please don't block the gate.
- Climb over the gate and follow the track marked blue on the map. After approx 450m the entrance to Dreamweaver Wood will be on your right.

2. **For Satnav:** the nearest postcode is **TN32 5SH** as shown by the marker on the maps. The main coordinates for access and parking are: **50.970969, 0.523210**. **W3W:** [///obey.amounting.caveman](https://www.what3words.com/en/obey.amounting.caveman)

3. We recommend downloading [OS maps](#) to your phone. It's very useful for giving you an idea of where you are on the ground when viewing woodlands.

**Please note:** the particulars with plans, maps, descriptions and measurements are for reference only and although carefully checked we cannot guarantee their accuracy and do not form part of any contract. Any intending purchasers must satisfy themselves by inspection or otherwise as to the correctness of these particulars.